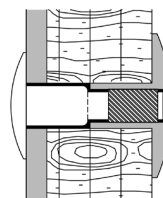
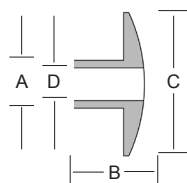
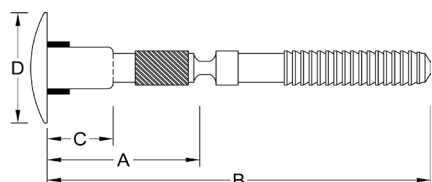


Steel Hucktainer®

Hucktainer® is used For Metal to Ply/GRP applications where a Low profile finish is desirable on both sides. Install with consistency and control.

Material: Lockbolt: Steel
Sleeve: Steel



Pin Code	Hole Size mm	Grip Range mm	A mm	B mm	C mm	D mm
HLPP-R12-10	10.3 - 10.7	14.3 - 17.5	15.9	56.7	2.30	21.0
HLPP-R12-12	10.3 - 10.7	17.5 - 20.6	19.0	59.9	5.60	21.0
HLPP-R12-14	10.3 - 10.7	20.6 - 23.8	22.2	63.0	8.80	21.0
HLPP-R12-16	10.3 - 10.7	23.8 - 27.0	25.4	66.2	11.9	21.0
HLPP-R12-18	10.3 - 10.7	27.0 - 30.2	28.6	69.4	11.9	21.0
HLPP-R12-20	10.3 - 10.7	30.2 - 33.3	31.7	72.6	11.9	21.0
Collar Code	A mm	B mm	C mm	D mm		
HLPS-R12	10.3	13.1	28.5	6.20		

The fastener rotates through 90° on installation.
Use the correct nose assembly to ensure optimal installation.