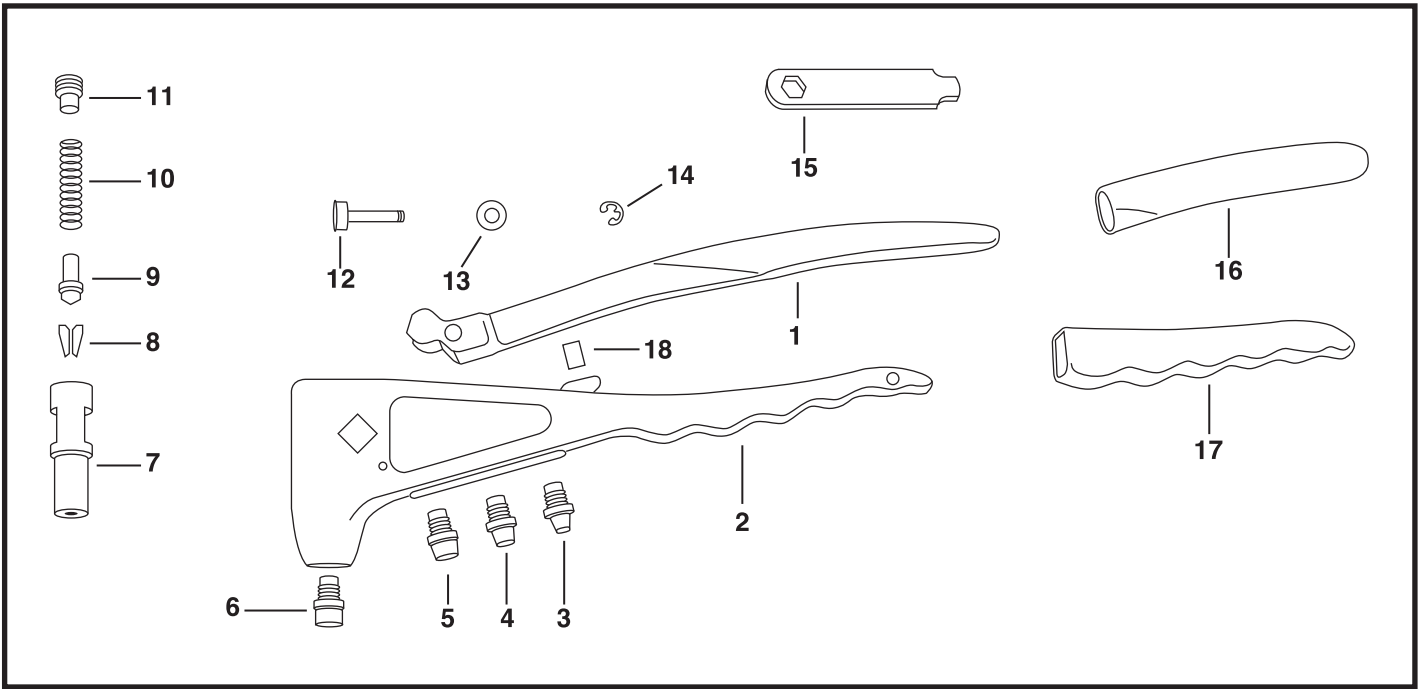
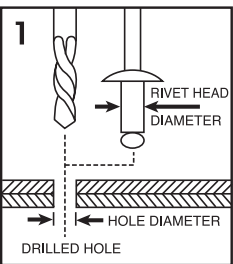


RIVTEC® TT55HD HAND RIVETER

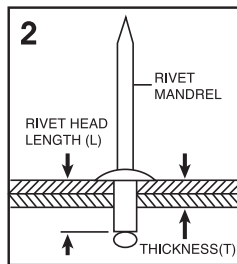


NO	PART NO	DESCRIPTION
1	TT55HD-1	Upper Handle
2	TT55HD-2	Aluminium Body
3	TT55HD-3	Nosepiece 2.4mm (3/32")
4	TT55HD-4	Nosepiece 3.2mm (1/8")
5	TT55HD-5	Nosepiece 4.0mm (5/32")
6	TT55HD-6	Nosepiece 4.8mm (3/16")
7	TT55HD-7	Jaw Case
8	TT55HD-8	Jaws (2 pc)
9	TT55HD-9	Jaw Pusher

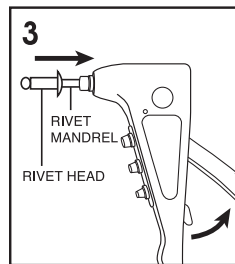
NO	PART NO	DESCRIPTION
10	TT55HD-10	Jaw Pusher Spring
11	TT55HD-11	Retaining Screw
12	TT55HD-12	Fulcrum Pin
13	TT55HD-13	Fulcrum Pin Bearing
14	TT55HD-14	Snap Ring
15	TT55HD-15	Wrench
16	TT55HD-16	Upper Grip
17	TT55HD-17	Lower Grip
18	TT55HD-18	Shock Absorber



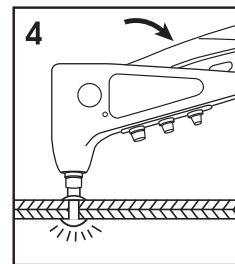
1 Select appropriate Rivet for application and drill same size hole through materials to be fastened.



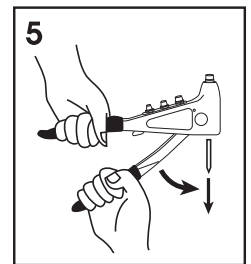
2 Select Rivet Head Length (L) based on the combined thickness (T) of materials to be fastened. It is suggested $L-T \geq 4.0\text{mm}$ or $0.16"$.



3 Open Tool Handle fully and insert Rivet Mandrel all the way into Tool Nosepiece, then insert Rivet Head into the drilled hole completely.

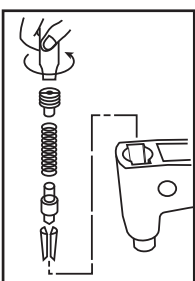


4 Squeeze Tool Handle until Rivet Mandrel breaks off. If more than one squeeze is required, open Tool Handle fully and squeeze again.

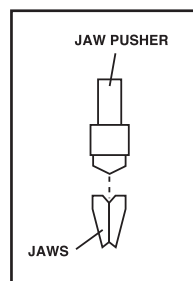


5 Finally open Tool Handle fully to eject Rivet Mandrel from Tool.

HOW TO CHANGE JAWS, ETC. PARTS



1. Close Tool Handle completely.
2. Remove Retaining Screw with Wrench, then remove Jaw Pusher Spring, Jaw Pusher and Jaws from Jaw Case.
3. Clean or replace Jaws, oiling outside of Jaws before re-assembly.



4. Reverse the above steps to reassemble, making sure that bevelled end of Jaw Pusher fits into the bevel provided by the Jaws.