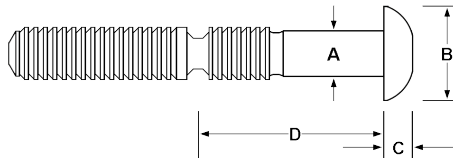


## Stainless Standard Lockbolts

Standard Lockbolts offer high shear and tensile strength, excellent vibration resistance and sealing properties. Quick and simple to install, Standard Lockbolts provide consistent high uniform clamp force with every installation. Standard Lockbolts are available with standard or flanged collars.



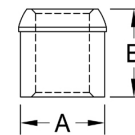
**Material:** Lockbolt: Stainless Steel  
Collar: Stainless Steel



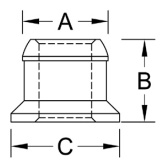
Diameter mm	Part Code	Grip Range mm	Hole Size mm	A mm	B mm	C mm	D mm	Clamp KN	Shear KN	Tensile KN
6.4	SDLB-0804SS	4.80 - 7.90	6.80	6.60	13.4	3.90	16.4	8.00	13.9	12.5
	SDLB-0806SS	7.90 - 11.1	6.80	6.60	13.4	3.90	19.6	8.00	13.9	12.5
	SDLB-0808SS	11.1 - 14.3	6.80	6.60	13.4	3.90	22.7	8.00	13.9	12.5
	SDLB-0811SS	15.9 - 19.1	6.80	6.60	13.4	3.90	27.5	8.00	13.9	12.5
	SDLB-0814SS	20.6 - 23.8	6.80	6.60	13.4	3.90	32.2	8.00	13.9	12.5
	SDLB-0816SS	23.8 - 27.0	6.80	6.60	13.4	3.90	35.4	8.00	13.9	12.5
	SDLB-0818SS	27.0 - 30.2	6.80	6.60	13.4	3.90	38.6	8.00	13.9	12.5
	SDLB-0820SS	30.2 - 33.3	6.80	6.60	13.4	3.90	41.8	8.00	13.9	12.5
8.0	SDLB-1004SS	3.20 - 9.50	8.40	8.20	16.7	5.10	19.8	12.0	22.0	22.0
	SDLB-1006SS	6.40 - 12.7	8.40	8.20	16.7	5.10	23.0	12.0	22.0	22.0
	SDLB-1008SS	9.50 - 15.9	8.40	8.20	16.7	5.10	26.2	12.0	22.0	22.0
9.6	SDLB-1206SS	6.40 - 12.7	10.0	9.80	20.0	6.30	21.4	17.5	29.0	35.0
	SDLB-1208SS	9.50 - 15.9	10.0	9.80	20.0	6.30	27.8	17.5	29.0	35.0
	SDLB-1210SS	12.7 - 19.1	10.0	9.80	20.0	6.30	30.9	17.5	29.0	35.0
	SDLB-1212SS	15.9 - 22.2	10.0	9.80	20.0	6.30	34.1	17.5	29.0	35.0

Collar Diameter (nom)	Collar Type	Part Code	A (max) mm	B (max) mm	C (max) mm
6.4	Standard	SLC-2CU8	10.1	8.20	-
	Flanged	SLCF-2CU8	10.1	9.50	13.2
8.0	Standard	SLC-2CU10	12.3	9.50	-
	Flanged	SLCF-2CU10	12.3	10.6	16.4
9.6	Standard	SLC-2CU12	14.9	11.9	-
	Flanged	SLCF-2CU12	15.2	13.3	19.7

Standard



Flanged



When using flanged Collars the max grip is reduced by the flange thickness  
(6.4mm = 2.0m, 9.6mm = 3.2mm)

PERFORMANCE GUIDE - There figures represent minimum fastener shear and tensile strength values with the use of a standard collar.